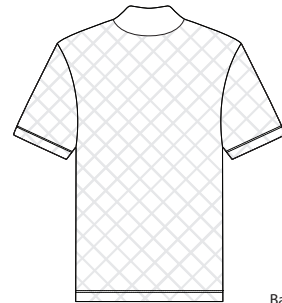


Dri-Fit Cross Texture POLO

NIKE GOLF 



Front



Back

349899

Engineered with Nike comfort and performance, the legendary Dri-FIT fabric takes on a new look with this subtle cross-over pattern. It's a winning alternative to a solid shirt. Features a solid rib-knit collar, three-button placket and open sleeves. Contrast Swoosh design trademark is embroidered on the left sleeve. Made of 6.0-ounce, 100% polyester.



Care Instructions:
Machine wash warm
Wash with like colors
Do not bleach
Tumble dry low
Cool iron
Do not dry clean
Do not use softeners

Finished Measurements in Inches

Size	XS	S	M	L	XL	2XL	3XL	4XL	5XL
Chest	19	20 1/2	22	23 1/2	25	26 1/2	28	29 1/2	31
Length	27 1/2	28 1/2	29 1/2	30 1/2	32	33 1/2	34 1/2	35 1/2	36 1/2
Shoulder	17 1/2	18 3/4	20	21 1/4	22 1/4	23 1/4	24 1/4	25 1/4	26 1/4
Sleeve	19 1/4	20	20 3/4	21 1/2	22	22 1/2	23	23 1/2	24
Collar	16 1/4	17	17 3/4	18 1/2	19 1/4	20	20 3/4	21 1/2	22 1/4

* Chest measured 1" below armhole. Sleeve length measured from CB neck seam to sleeve seam; pivot; to bottom hem.

Colors

	White
	Black
	New Blue
	Midnight Navy

Please Note:
Colors shown are approximate and for reference only. For closest match see PMS colors, or for exact match, returnable samples and grommited samples are available.

Color Chart

Colors	White	Black	New Blue	Midnight Navy
Textile PMS	No Match	No Match	No Match	No Match
General PMS	ProBlk C	534C	660 C	532 C