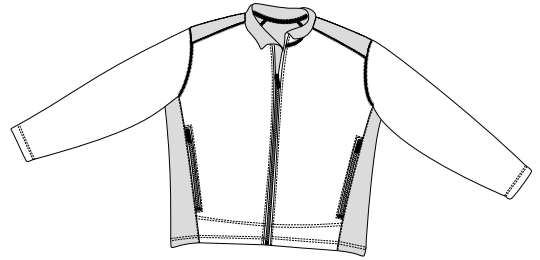
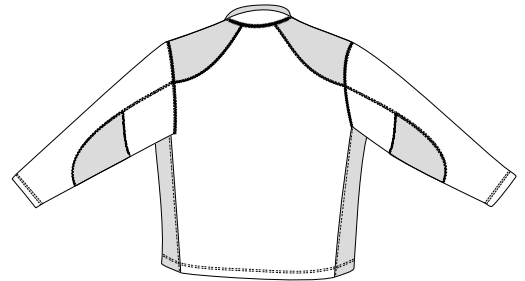


Soft Shell Two-Tone Jacket

PORT AUTHORITY®



Front



Back

J794

- * 100% Polyester interlock surface with clear lamination bonded to 100% polyester fleece
- * 300MM waterproof rating * 300 GM/M2 breathability rating * Storm flap
- * Open bottom hem with drawcord and toggle * two front zipper pockets

Care Instructions:

Machine wash cold.
Do not dry clean, do not iron.
Do not bleach, do not tumble dry.

Finished Measurements in Inches

Size	XS	S	M	L	XL	2XL	3XL	4XL
Length	27 1/4	28	28 3/4	29 1/2	30 1/2	31 1/2	32	32 1/2
Chest	20 1/2	22 1/2	24	25 1/2	27	28 1/2	30	31 1/2
Sleeve	33	34 1/4	34 1/2	35 1/4	36	36 3/4	32 1/2	33
Collar Ht	4	4	4	4	4	4	4	4
Chest Pkt	7	7	7 1/2	7 1/2	7 1/2	8	8	8
Areas for Decoration	Left Chest / Right Chest / Full Back				Port Pocket™		NA	

Collar measured center back seam to top hem, Chest width 1" below arm hole, Side pocket from top to bottom of opening, Body length from back neck seam to hem, Sleeve length from center back seam to hem

Colors

	Navy/Graphite
	Graphite/Black
	Black/Graphite
	Terracotta/Black
	Sahara/Dark Mocha

Please Note:

Colors shown are approximate and for reference only. For closest match see PMS colors, or for exact match, returnable samples and grommeted samples are available.

Color Chart

Jacket Colors	Navy	Graphite	Black	Terracotta	Sahara
Textile PMS	14-4019 TC	19-3905 TC	19-0303 TC	18-1531 TC	No Match
General PMS	532 C	425 C	Process Black	704 C	7535 C
Accent Colors	Graphite	Black	Graphite	Black	Dark Mocha
Textile PMS	19-3905 TC	19-0303 TC	19-3905 TC	19-0303 TC	No Match
General PMS	425 C	Process Black	425 C	Process Black	No Match